



Hose Handling Slings

In the case of Gutteling 'Heavy Duty' loading and unloading hoses (ship to shore applications), the use of at least one wide support sling is recommended for hoses with a maximum length of 6 mtr and an inner diameter between 100 m/m and 300 m/m. For longer hoses, at least two wide support slings per hose must be used and in the case of diameters above 200 m/m the use of a so-called 'saddle' is required.

All hose handling slings can be delivered with CE-certificate.



Never use rope slings as severe hose damage will be the result.

Code number	39100210100	39100210150	39100210200	39100210250	39100210300
Hose diameter	4"	6"	8"	10"	12"
Max. hose length	6m/20 ft	6m/20 ft	6m/20 ft	6m/20 ft	6m/20 ft

Wide Support Hosebuns

Gutteling hosebuns are composed of a red polymer and are used with latex-treated yellow web slings uniquely engineered for each specific model of hosebun. Sling rated capacities are established using a 5:1 safety factor. All slings are used in a choker hitch position to eliminate hose slippage. All hosebuns can be delivered with CE-certificate.

Never use rope slings as severe hose damage will be the result.



Hose size	3"	4"	6"	8"	10"	12"
Hosebun model	HB300	HB400	HB600	HB800	HB1000	HB1200
Length (inches)	9,8	11,5	21,5	30	41	41
Weight (lbs.)	2,5	3,75	13,75	29,75	53	60
Sling width (inches)	1,75	1,75	4	6	8	10
Sling length (inches)	30,5	34,5	39	50	62	75
Rated capacity (lbs.)	1500	1500	8000	12000	15000	15000

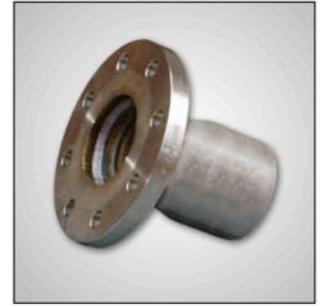
Flange Couplings

Fixed Flanges ASA or DIN or TTMA or JIS

Size: 1" to 12"

Material: Carbon Steel / Stainless Steel

Ferrule: Carbon / Stainless Steel



Floating Flanges ASA or DIN or TTMA or JIS

Size: 1" to 12"

Material: Stub End Carbon Steel / Stub End Stainless Steel / Stub End Brass /
Stub End Polypropylene / Flange Carbon Steel /
Flange Stainless Steel / Flange Polypropylene

Ferrule: Carbon / Stainless Steel



Threaded Couplings

Male threaded nipple NPT or BSP

Size: 1" to 8"

Material: Carbon Steel / Stainless Steel / Aluminium / Brass / Polypropylene

Ferrule: Carbon / Stainless Steel



Female threaded swivel nut coupling NPT or BSP

Size: 1" to 8"

Material: Carbon Steel / Stainless Steel / Aluminium / Brass / Polypropylene

Ferrule: Carbon / Stainless Steel



All Gutteling end fittings are reusable and are assembled according Gutteling unique swaging method with GCH Epoxy.

Fittings in other material combinations or to customer's specifications are available on request.

**FOR COMPETITIVE PRICING
AND**

INCOMPARABLE SERVICE

www.shipandshore.com.au

sales@shipandshore.com.au